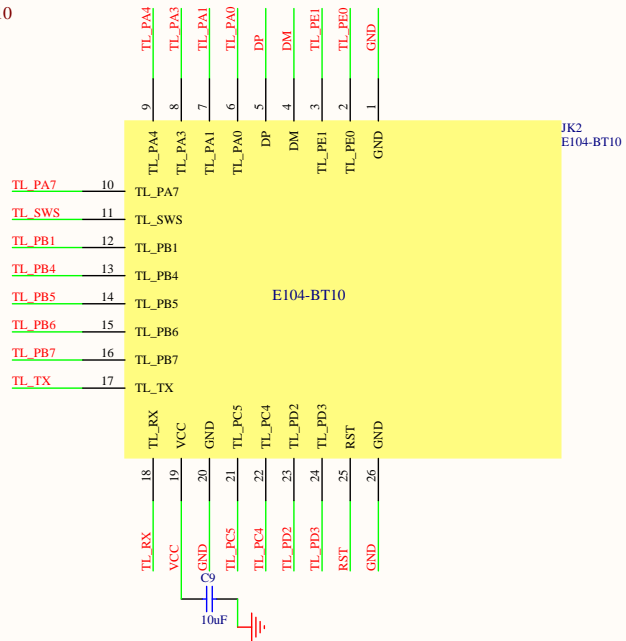
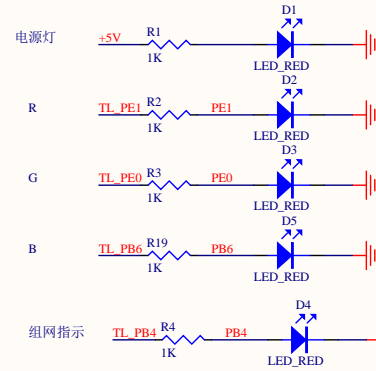


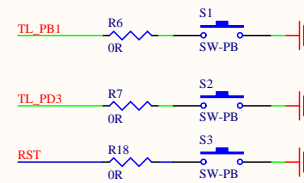
E104-BT10



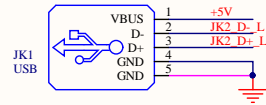
LED



BUTTON



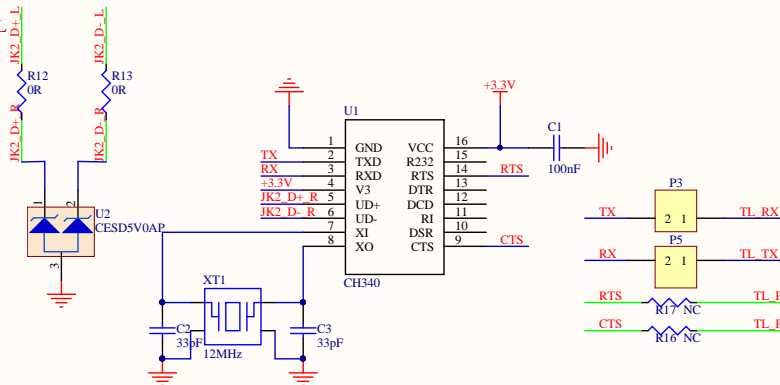
USB(通过电阻跳接来改变USB)



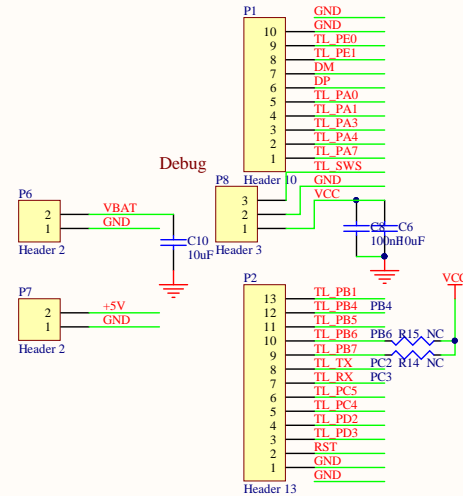
直接用芯片的USB功能



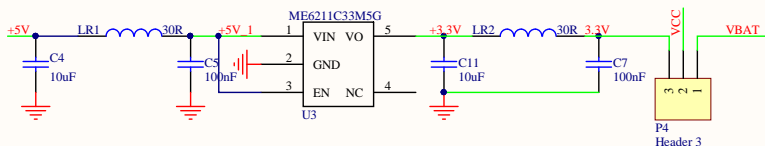
通过USB转TTL



I2C加外部上拉 (PB6/PB7引脚)



IC供电



Title			
Size	Number	Revision	
A3			
Date:	2020-08-13	Sheet of	
File:	E:\SCH\...\E104-BT10-TB-SCH.SchDoc	Drawn By:	