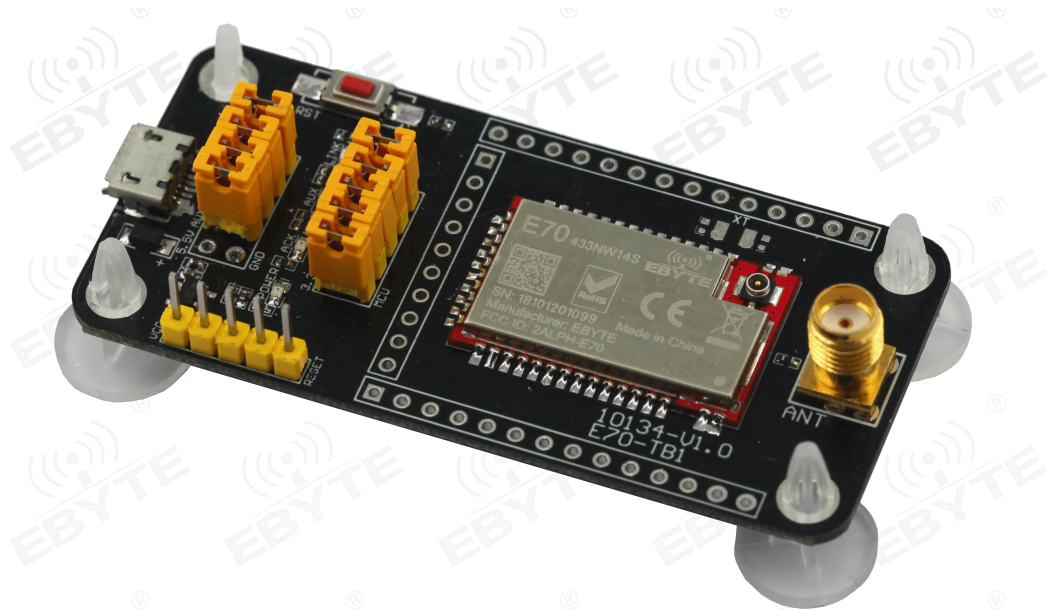




## E70-433TBL-NW01 Datasheet

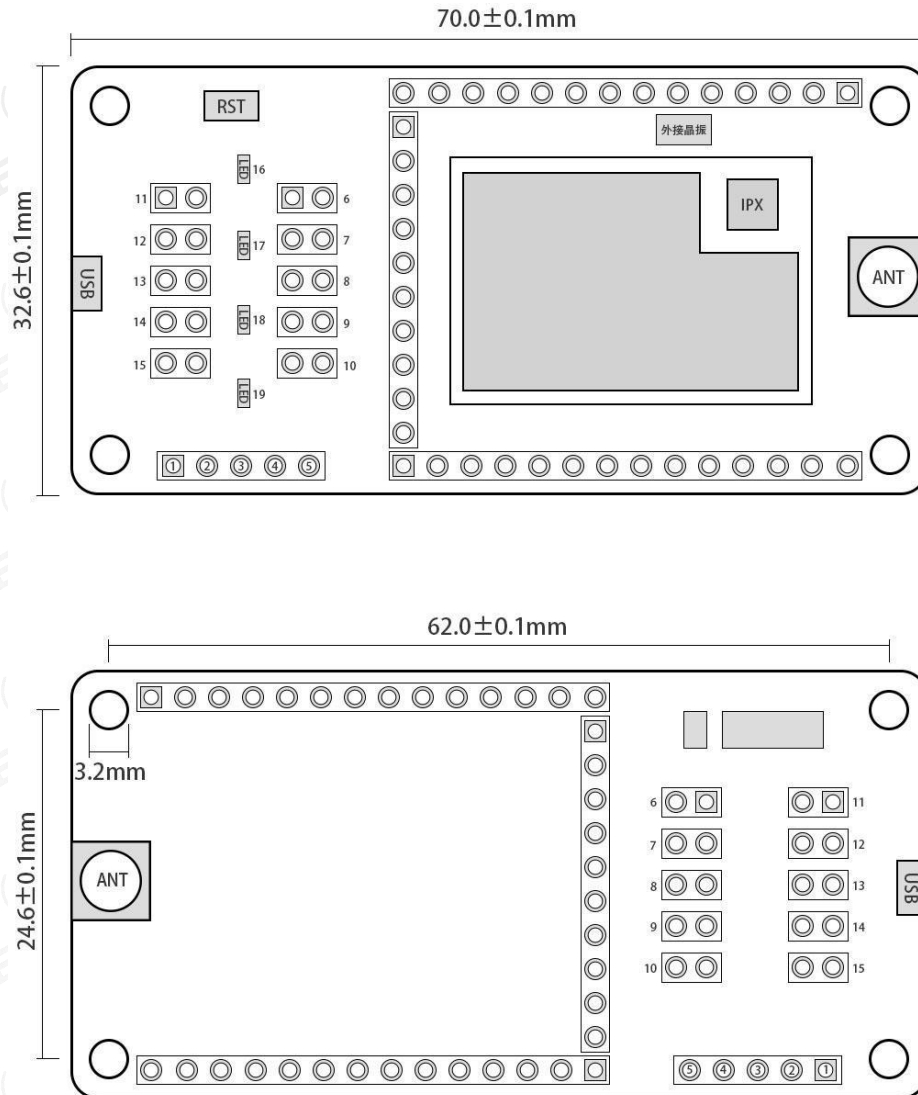


# 1. Introduction



1. [E70-433NW14S](#) has been pre-welded on E70-433TBL-NW01 test board, please refer to the module manual for details.
2. All IO(E70 series)has been led out.
3. With CH340G serial chip, user can develop serial communication.
4. With MICRO-USB interface, user can connect to the computer.
5. Users can access external power supply and serial port for secondary development.
6. Work stable and easy to develop.

## 2. Size and Pin Definition



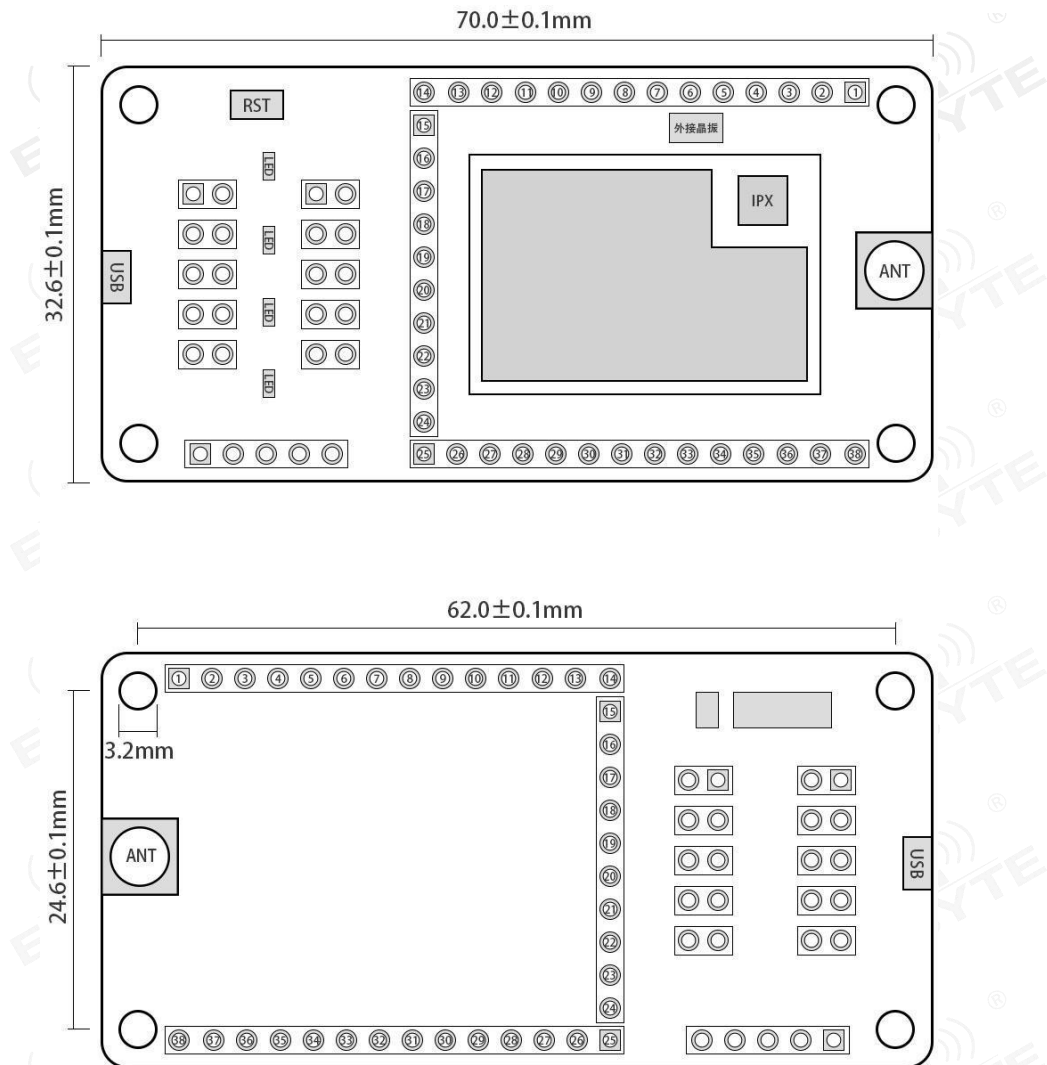
No	Pin	Function	Note
1	VCC	Connect to downloader VCC	Download port
2	GND	Connect to downloader GND	
3	TMSC	Connect to downloader TMSC	
4	TCKC	Connect to downloader TCKC	
5	RESET	Connect to downloader RESET	
6	M2	M2 mode selection port, insert the jumper M2 = 0, and pull it out, otherwise, take jumper, M2=1	E70-433NW14S module does not have this mode, Please remove this jumper at this time.
7	M1	M2 mode selection port, insert the jumper M2 = 0, and pull it out, otherwise, take jumper, M2=1	Mode selection port
8	M0	M2 mode selection port, insert the jumper M2 = 0, and pull it out, otherwise, take jumper, M2=1	Mode selection port

9	ACK	ACK light select port, insert the jumper to connect ACK light	
10	3.3V-MCU	E70 module test current port, insert the jumper, E70 module power on(3.3V)	To test the module current, please pull off ACK Lamp, AUX lamp, LINK lamp selection port
11	TXD	Serial port RXD selection end,, insert the jumper,USB serial port TXD and Module RXD is connected. The user can use the serial port for other purposes.	
12	RXD	Serial port RXD selection end, insert the jumper, USB serial port RXD and Module TXD is connected. The users can use the serial port for other purposes.	
13	LINK	Link light selection port, insert the jumper to connect with ACK light	
14	AUX	AUX lamp selection port, insert the jumper to connect the ACK lamp, this function can be used to current test	
15	+5VIN	5V external power supply access port, connect external power supply (+5V and GND) is also available if user don't want to use USB power supply.	
16	LINK light	Network access indicator light, this light is on when the module successfully enters the network	Indicator light
17	AUX light	Module idle indicator light, this light is on when the module is idle	
18	ACK light	Module sending status indicator, this light is on when the module is transmitting	
19	POWER light	Power indicator light, this light is on when the test board power supply is connected	

Remarks:

The crystal oscillator has been connected to E70 module, and the user can also connect an external crystal oscillator (the external crystal oscillator pad has been left)

### 3. Lead out pin



E70-TBL-NW01 (Front) Pin description

No	Name	Note
1	GND	-
2	GND	-
3	DO_1	-
4	DO_2	-
5	DO_3	-
6	DO_4	-
7	DO_5	-

8	DO_6	-
9	DO_7	-
10	DO_8	-
11	DO_9	-
12	DO_10	-
13	DO_11	-
14	GND	-
15	DO_12	M0 mode pin
16	DO_13	M1 mode pin
17	DO_14	E70 module UART_RX pin
18	DO_15	E70 module UART_TXpin
19	DO_16	-
20	DO_17	-
21	DO_18	AUX Pin
22	VCC	Module power access (+3.3V)
23	GND	-
24	DO_19	ACK Pin
25	DO_20	-
26	DO_21	-
27	DO_22	-
28	RESET	Reset pin
29	DO_23	-
30	DO_24	-
31	DO_25	LINK pin
32	DO_26	-
33	DO_27	-
34	DO_28	-
35	DO_29	-
36	DO_30	-
37	GND	-
38	GND	-

## 4. Driver Installation

Use CH340G chip as the serial port, please download and use the [driver software](#) provided by our company; after the installation is complete, the serial port number can be recognized in the device manager.

### About Us

Technical support: [support@cdebyte.com](mailto:support@cdebyte.com);

Documents and RF Setting download link: [www.ebyte.com](http://www.ebyte.com)

Tel: +86-28-61399028

Fax: 028-64146160

Web: [www.ebyte.com](http://www.ebyte.com)

Address: Building B5, Mould Industrial Park, 199# Xiqu Avenue, Chengdu, Sichuan



**Chengdu Ebyte Electronic Technology Co.,Ltd.**