



E78-900TBL-01A User Manual

Development Kit



Contents

Disclaimer..... 2

1. Introduction.....3

2 Test Process..... 5

3 Revision History.....6

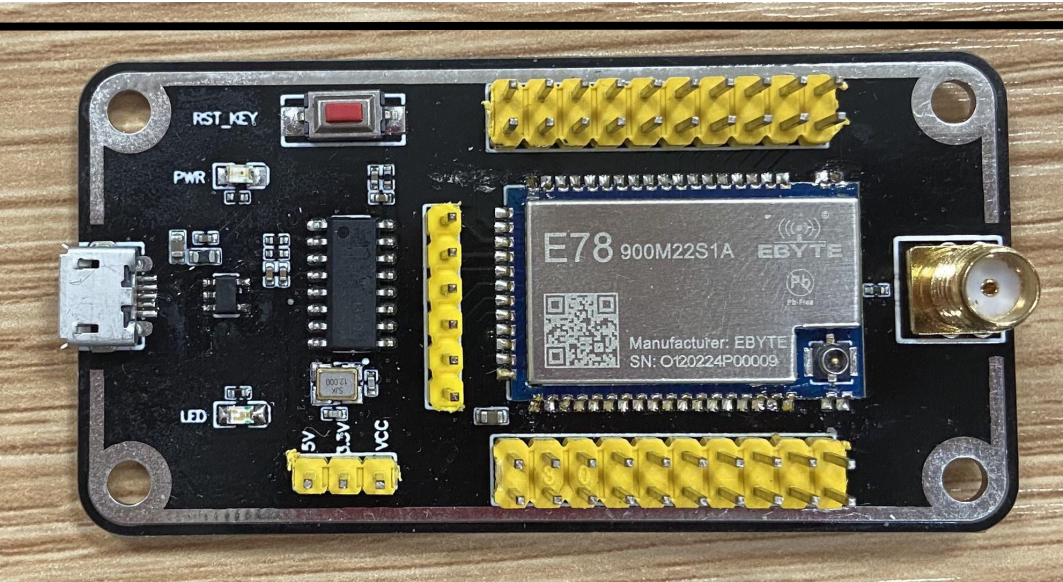
4 About us..... 7

Disclaimer

EBYTE reserves all rights to this document and the information contained herein.

Products, names, logos and designs described herein may in whole or in part be subject to intellectual property rights. Reproduction, use, modification or disclosure to third parties of this document or any part thereof without the express permission of EBYTE is strictly prohibited.

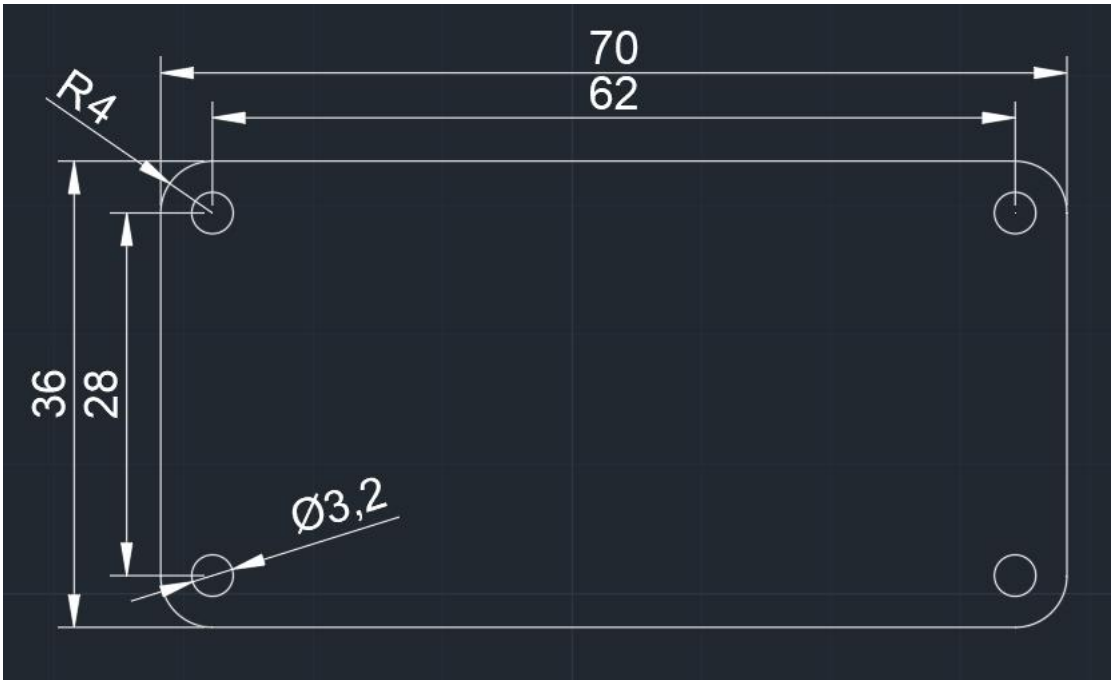
The information contained herein is provided “as is” and EBYTE assumes no liability for the use of the information. No warranty, either express or implied, is given, including but not limited, with respect to the accuracy, correctness, reliability and fitness for a particular purpose of the information. This document may be revised by EBYTE at any time. For most recent documents, visit www.ebyte.com.

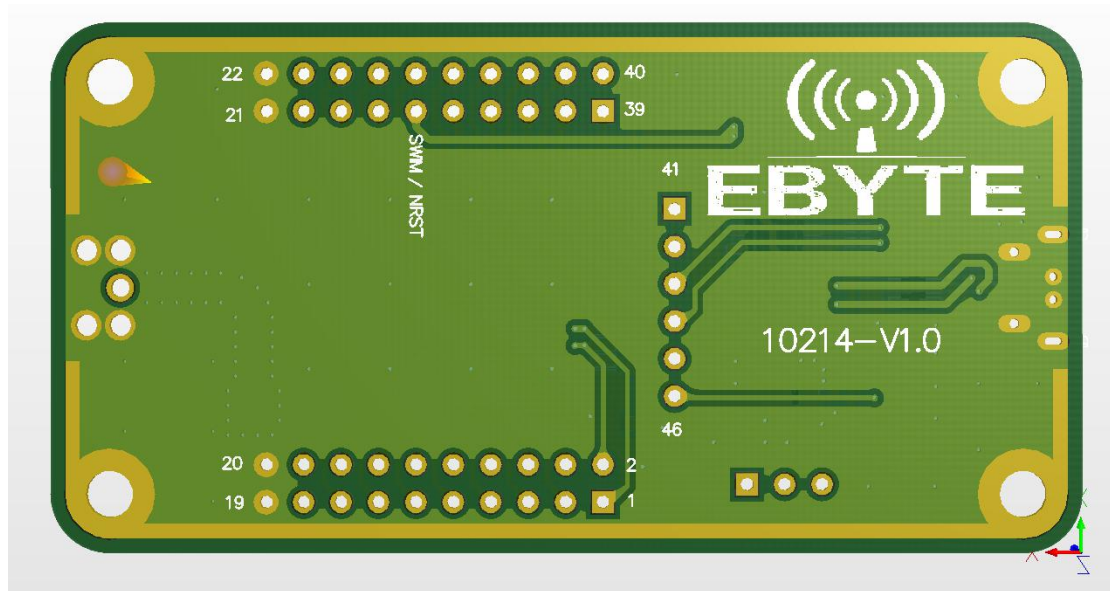


1. Introduction

E78-900TBL-01A is a test kit specially designed for E78 series SMD SOC module combined with USB to TTL serial port backplane. All the pins of E78-900M221A module have been led out for customer testing and development, which greatly reduces customer testing and development Difficulty.

1.1.Size, interface description





Pin No.	Name	Functions
1	LCD_SEG8	Module user-defined IO pin
2	LCD_SEG9	Module user-defined IO pin
3	LCD_SEG11	Module user-defined IO pin
4	LCD_SEG10	Module user-defined IO pin
5	LCD_SEG13	Module user-defined IO pin
6	LCD_SEG12	Module user-defined IO pin
7	LCD_SEG15	Module user-defined IO pin
8	LCD_SEG14	Module user-defined IO pin
9	LCD_SEG17	Module user-defined IO pin
10	LCD_SEG16	Module user-defined IO pin
11	I2C_SCL	Module I2C_SCL pin
12	I2C_SDA	Module I2C_SDA pin
13	ADC_IN1	Module ADC_IN1 input pin
14	ADC_IN0	Module ADC_IN0 input pin
15	GPIO3	Module user-defined IO pin
16	GPIO2	Module user-defined IO pin
17	ADC_IN2	Module ADC_IN2 input pin
18	GPIO4	Module user-defined IO pin
19	GND	Floor reference ground
20	GND	Floor reference ground
21	GND	Floor reference ground
22	GND	Floor reference ground
23	SPI_SLCK	Module SPI_SLCK pin
24	SPI_NSS	Module SPI_NSS pin
25	SPI_MOSI	Module SPI_MOSI pin
26	SPI_MISO	Module SPI_MISO pin
27	LCD_SEG2	Module user-defined IO pin
28	LCD_SEG1	Module user-defined IO pin
29	NRST	Module external reset pin
30	SWIM	Module SWIM pin

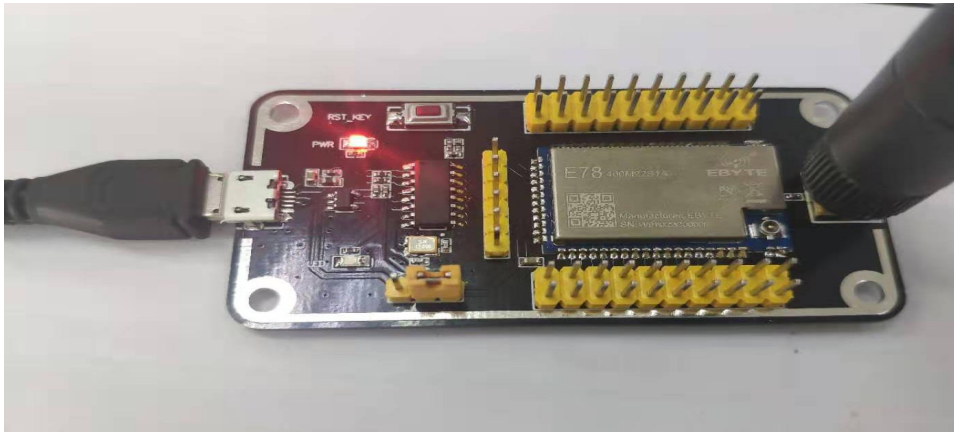
31	LCD_COM1	Module user-defined IO pin
32	LCD_COM0	Module user-defined IO pin
33	VREFP	Module ADC reference voltage input pin
34	LCD_COM2	Module user-defined IO pin
35	UART1_TX	Module UART1_TX pin
36	UART1_RX	Module UART1_RX pin
37	LCD_SEG0	Module user-defined IO pin
38	VLCD	Module VLCD pin, when it is LCD_xx, this pin is connected to the power supply 3.3V
39	LCD_SEG3	Module user-defined IO pin
40	LCD_COM3	Module user-defined IO pin
41	LCD_SEG4	Module user-defined IO pin
42	LCD_SEG5	Module user-defined IO pin
43	UART0_RX	Module UART0_RX pin
44	UART0_TX	Module UART0_TX pin
45	LCD_SEG6	Module user-defined IO pin
46	LCD_SEG7	Module user-defined IO pin

2 Test Process

2.1 Driver

Download CH341SER.EXE, double-click to install. This driver supports 32/64-bit Windows 10/8.1/8/7/VISTA/XP, SERVER2016/2012/2008/2003, 2000/ME/98, has passed Microsoft digital signature certification, and supports USB to 3-wire and 9-wire serial ports Wait.

2.1 Hardware Connection



As shown in the picture, plug in the jumper cap and select 3.3V power supply to power the module. Both E78-900TBL-01A are configured in this way. Open the corresponding serial port to send and receive data.

(Because the E78 series does not have a built-in program, if you need to send and receive data through the serial port, you need to write the program by yourself)



3 Revision History

Version	Date	Version	Name
1.0	2021-03-05	Initial Version	Linson

4 About us

Technical support: support@cdebyte.com

Documents and RF Setting download link: www.ebyte.com

Thank you for using Ebyte products! Please contact us with any questions or suggestions: info@cdebyte.com

Fax: 028-64146160 ext. 821

Web: www.ebyte.com

Address: Building B5, Mould Industrial Park, 199# Xiqu Ave, West High-tech Zone, Chengdu, 611731, Sichuan, China

