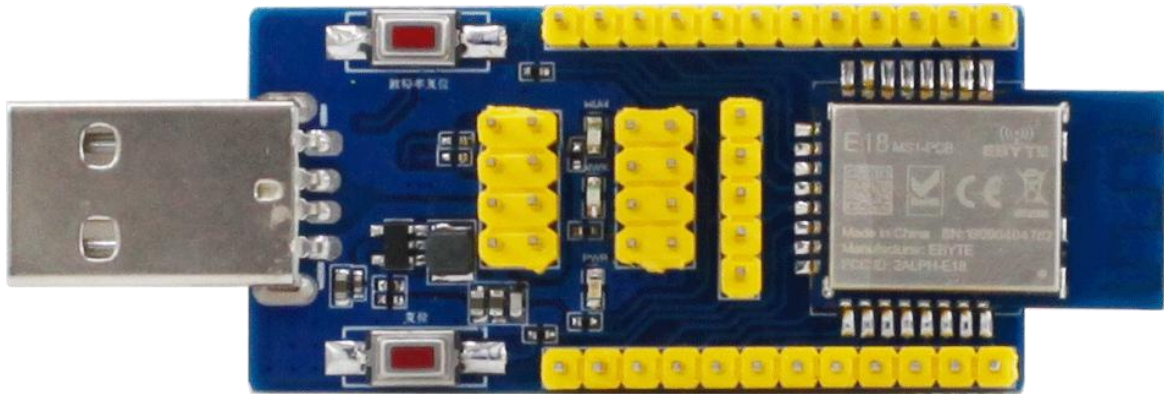




E18-TBH-27 User manual 1.0



1、 Brief Introduction

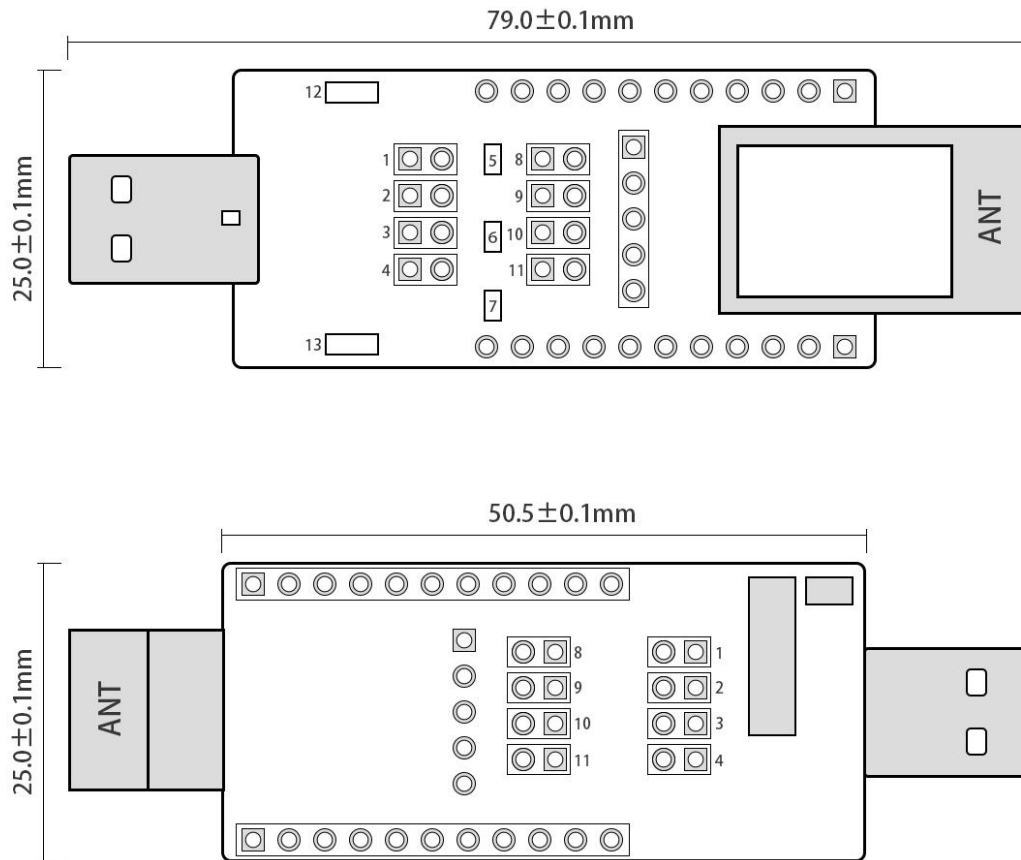


1. This product is used for testing and development of Chengdu Ebyte E18 series wireless modules (E18-2G4Z27SI, E18-MS1-PCB, E18-MS1-IPX, E18-MS1PA1-PCB, E18-MS1PA1-IPX), The E18-TBH-27 has been pre-welded with E18-2G4Z27SI .

For more detailed use, refer to the module manual.

2. All IO of the E18 series wireless module have been extracted.
3. With CH340G serial port chip, you can develop serial communication.
4. With USB interface, you can plug directly into the computer.
5. Users can access the external power supply and serial port for secondary development.
6. This product is stable and easy to develop.

2、Instructions for use



Serial number description:

①	Serial TXD selection port (P1.4)	②	Serial port RXD selection port (P1.5)
③	External 5V power supply port	④	External 3.3V power supply port
⑤	Module running indicator	⑥	Networking indicator
⑦	Power Indicator	⑧	RLED selection port (P1.3)
⑨	NLED selection port (P1.2)	⑩	Mode selection port (P1.6)
⑪	SOC selection port (chip VCC)	⑫	Baud rate reset button
⑬	reset button		

Function Description:

1. Reset button: system reset
2. Baud rate reset button: Double click reset baud rate (default 115200) (P1.7)
3. TXD, RXD selection port: can be connected to external serial port
4. Mode selection port: Used to switch between AT command mode and HEX command mode. Plug in the jumper cap, indicated as HEX command mode (low level), no jumper cap is indicated as AT command mode (high level) (P1.6)
5. Ports ①, ②, ③, ④, ⑧, ⑨, ⑩ and ⑪ are used together to test the module current: ①, ②, ③, ④, ⑧, ⑨, ⑩, ⑪ ports are not plugged in wire jumper Cap. The ammeter meter pen contacts 11 ports (above: left and right negative), can test the chip current.

3、 Drive installation

Use CH340G chip as serial port, please download and use the driver software provided by our company; after installation, the serial port number can be identified in the device manager.

4、 Program download

E18 module built-in 8051 single-chip microcomputer, the program download uses our CC series dedicated downloader CC-DeBugger, can not use serial port or any other JTAG, ISP, ICP tools.

Users can download the compiled HEX file directly.



5、 Technical Support

If you have any questions during the development process, please contact our technical support. We only support our modules, and do not include the basic usage of the microcontroller.

6、 Communication test

