



成都亿佰特电子科技有限公司

Chengdu Ebyte Electronic Technology Co.,Ltd.

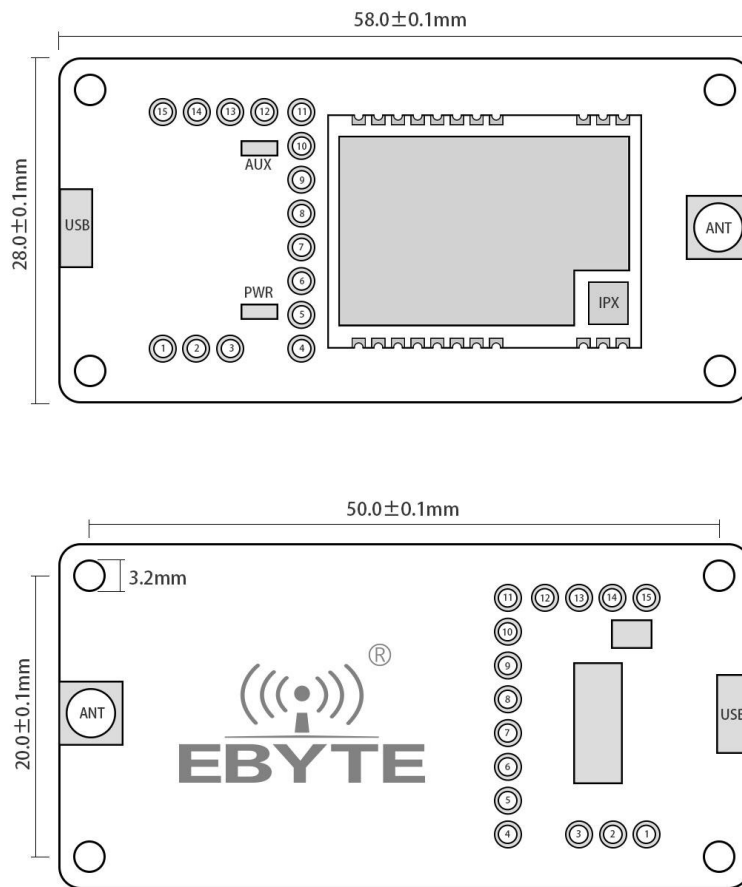
E32-400TBL-01 Datasheet v1.0



1. Introduction

E32-400TBL-01 is a set of test kits formed by serial SMD serial port module combined with USB to TTL serial port for customer's testing and development, which greatly reduces the difficulty of testing and development. About more details, please refer to manual of module E32-400T20S.

2. Size and Pin Definition



Pin	Value	Function
1	5V	Jumper short connected with VCC , for power input
2	VCC	Power input
3	3.3V	Jumper short connected with VCC , for power input
4	GND	Ground
5	VCC	Power input
6	NC1	/
7	NC2	/
8	NC3	/
9	RXD	RXD , to connect TXD of module for test
10	TXD	TXD , to connect RXD of module for test
11	AUX	Check more from manual of E22 module
12	M1	Pin M1 for mode selection , suspending means“1” , when short connected with GND, it is“0”
13	GND	Ground , often work with M1
14	M0	Pin M0 for mode selection , suspending means“1” , when short connected with GND, it is“0”
15	GND	Ground , often work with M0

3. Quick Start

3.1. Test preparation

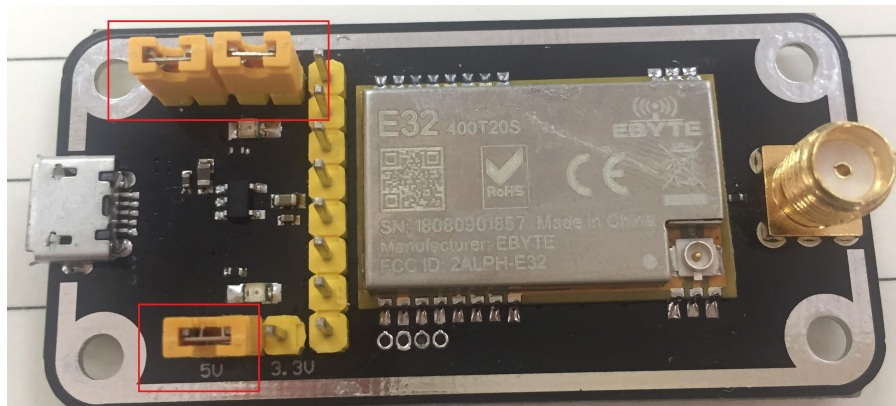
3.1.1. Install driver

Download driver program [CH341SER.EXE](#) from Ebyte website , double click to install. The driver program supports 32/64 bit Windows 10/8.1/8/7/VISTA/XP , SERVER2016/2012/2008/2003 , 2000/ME/98 , with software digital signature authentication , good for USB to 3-wire and 9-wire serial port connection.

3.1.2. Connect to hardware

Prepare power adaptor、Micro USB cable、antenna、power supply , connect them to test board E32-400TBL-01 , open corresponding serial port.

3.2. Communication in Mode 0



As shown above , connect to jumpers (5V power supply , mode 0) , both E32-400TBL-01 are configured this way , open serial port , for data TX and RX , and AUX indicator is blinking.



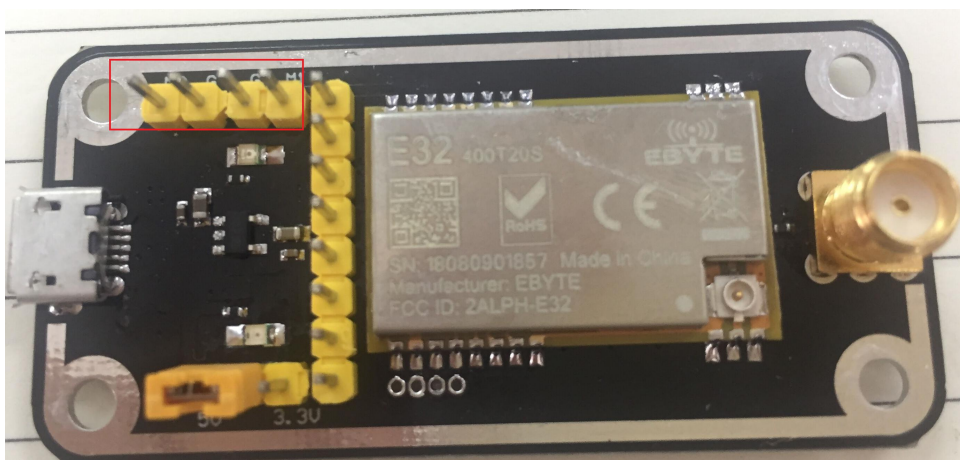
3.3 Other mode



As shown above , connect to jumpers (5V power supply , mode 1), see function details from E32 UART module manual.



As shown above , connect to jumpers (5V power supply , mode 2), see function details from E32 UART module manual.



As shown above , connect to jumpers (5V power supply , mode 3), see function details from E32 UART module manual.