



Chengdu Ebyte Electronic Technology Co.,Ltd.

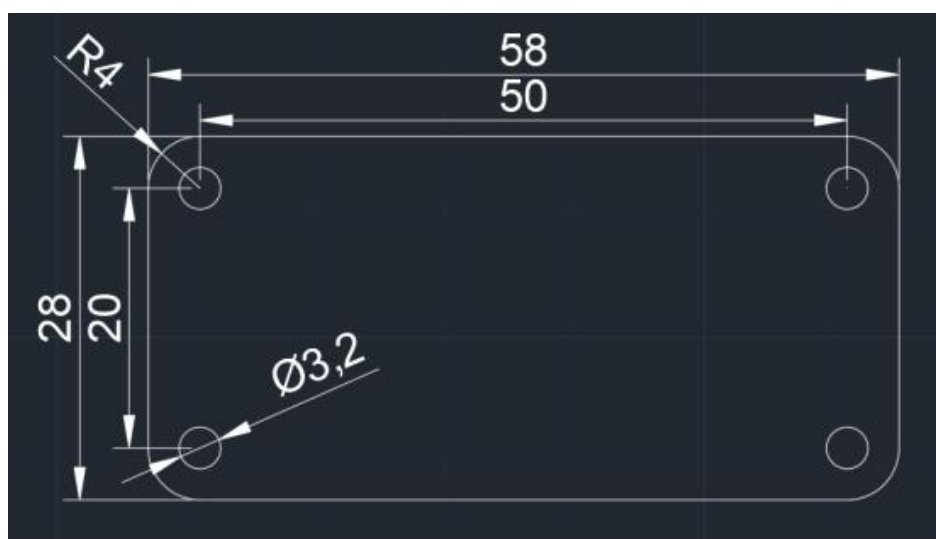
E49-400TBL-01 Usermanual v1.0

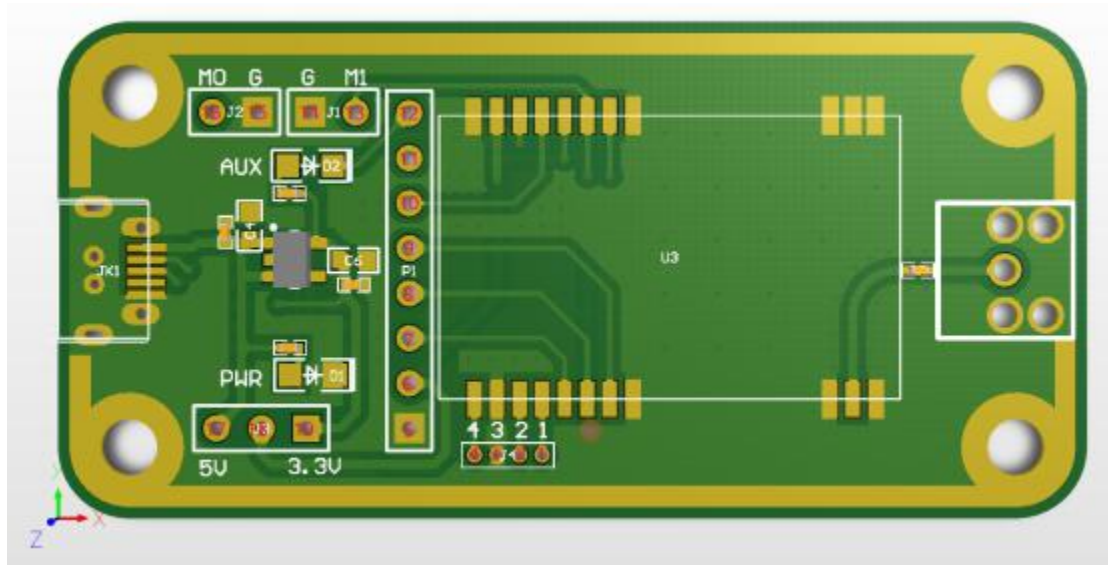


1. Product Introduction

E49-400TBL-01 is a complete set of test product specially formed for E49 series of patch modules combined with USB to TIL serial port board, which has led out all the pins of E49-400T20S module for customers test and development and greatly reduced the difficulty of customers test and development.

1.1. Size and Interface description





2

Pin NO.	Definition	Functions
1	3.3V	Module 3.3V Internet
2	SWCLK	Module SWD Clock Pin
3	GND	Baseplate reference
4	SWDIO	Module SWD Data Pin
5	GND	Baseplate reference
6	VCC	Module power supply input pin can be connected to 3.3V or 5V 5V recommended
7	RESET	Module external reset pin
8	P14	Module bow out IO port, not used
9	P23	Module bow out IO port, not used
10	TXD	Module TXD Pin
11	RXD	Module RXD Pin
12	AUX	Module UART RTS Pin
13	M1	Module operating mode selection Pin1
14	GND	Baseplate reference
15	GND	Baseplate reference
16	M0	Module operating mode selection Pin0
17	5V	5V network on baseplate
18	VCC	Pin selection of Module power supply can be connected to 3.3V or 5V 5V recommended
19	3.3V	3.3V network on baseplate

2. Quik Start

2.1. Test Preparation

2.1.1. Drive Installation

Please download drive program CH341SER.EXE on the official website and install it with double click. This program is available for 32/64 bit Windows 10/8.1/8/7/VISTA/XP SERVER2016/2012/2008/2003, 2000/ME/98, passes Microsoft digital signature authentication and supports USB line 3 and line 1 serial port, etc.

2.1.2. Hardware Connection

Please prepare the Micro USB cable and antenna, connect them to E49-400TBL-01 and open the corresponding serial port.



As shown in the picture, plug in the jumper cap and select 5V power supply or 3.3V to power the module. Both E49-400TBL-01 are configured in this way, open the corresponding serial port to receive and send data.

