



成都亿佰特电子科技有限公司

Chengdu Ebyte Electronic Technology Co.,Ltd.

E220-400TBL-01 Datasheet v1.0



目录

1. Introduction.....	4
2. Size and Pin Definition.....	4
3. Quick Start.....	5
3.1. Test preparation.....	5
3.2. Communication in Mode 0.....	5
3.3. Other modes.....	6

Disclaimer and copyright notice

The information in this article, including the URL for reference, is subject to change without notice. The document is provided "as is" without warranty of any kind, including any warranty of merchantability, fitness for a particular purpose or non-infringement, and any warranty of any proposal, specification or sample referred to elsewhere. This document does not bear any liability, including any infringement of any patent rights resulting from the use of the information contained in this document. No estoppel or other license, express or implied, is granted herein for the use of intellectual property.

All the test data obtained in this paper are obtained by E-Baite laboratory, and the actual results may be slightly different.

It is hereby declared that all trade names, trade marks and registered trade marks mentioned herein are the property of their respective owners.

The right of final interpretation belongs to Chengdu Yibaite Electronic Technology Co., LTD.

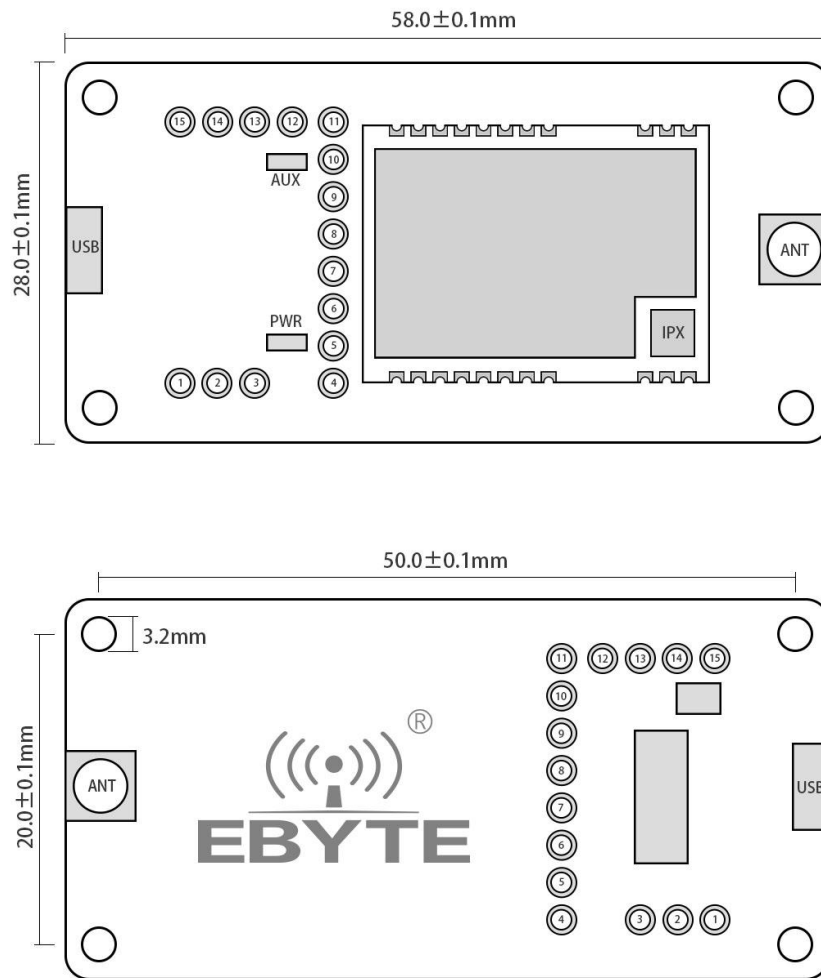
The attention

The contents of this manual may change due to product version upgrade or other reasons. E-baite Electronic Technology Co., Ltd. reserves the right to modify the contents of this manual without any notice or prompt. This manual is only used as a guide, and Chengdu Yibaite Electronic Technology Co., Ltd. makes every effort to provide accurate information in this manual, but Chengdu Yibaite Electronic Technology Co., Ltd. does not guarantee that the content of this manual is completely free of errors, and all statements, information and Suggestions in this manual do not constitute any express or implied warranty.

1. Introduction

E22-400TBL-01 is a set of test kits formed by serial SMD serial port module combined with USB to TTL serial port for customer's testing and development, which greatly reduces the difficulty of testing and development. About more details, please refer to manual of module E22-400T22S.

2. Size and Pin Definition



Pin	Value	Function
1	5V	Jumper short connected with VCC , for power input
2	VCC	Power input
3	3.3V	Jumper short connected with VCC , for power input
4	GND	Ground
5	VCC	Power input
6	NC1	/
7	NC2	/
8	NC3	/
9	RXD	RXD , to connect TXD of module for test

10	TXD	TXD , to connect RXD of module for test
11	AUX	Check more from manual of E22 module
12	M1	Pin M1 for mode selection , suspending means“1” , when short connected with GND, it is“0”
13	GND	Ground , often work with M1
14	M0	Pin M0 for mode selection , suspending means“1” , when short connected with GND, it is“0”
15	GND	Ground , often work with M0

3. Quick Start

3.1. Test preparation

3.1.1. Install driver

Download driver program [CH341SER.EXE](#) from Ebyte website , double click to install. The driver program supports 32/64 bit Windows 10/8.1/8/7/VISTA/XP , SERVER2016/2012/2008/2003 , 2000/ME/98 , with software digital signature authentication , good for USB to 3-wire and 9-wire serial port connection.

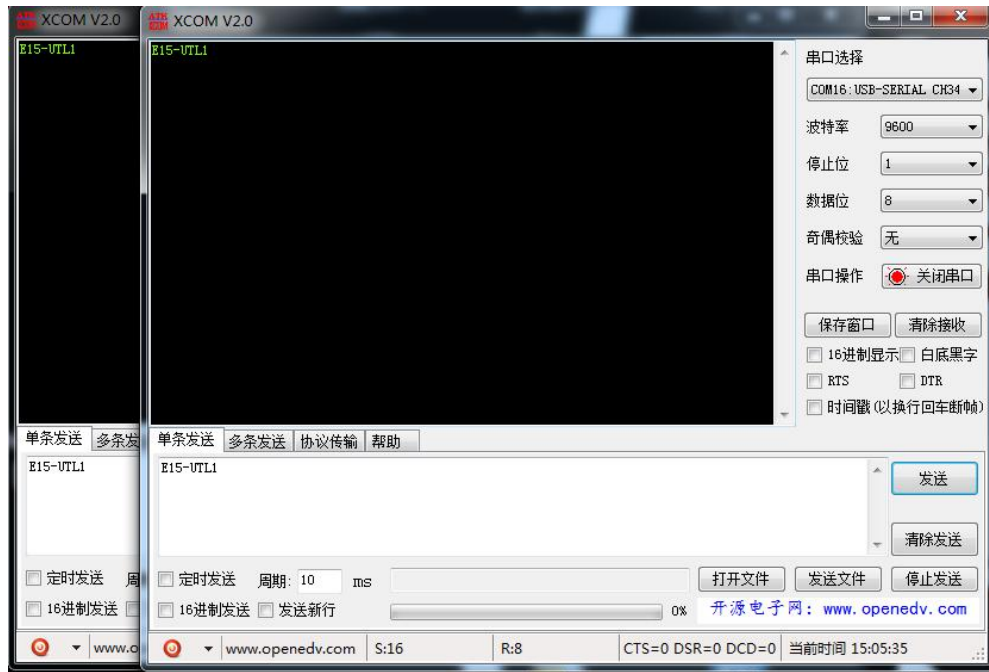
3.1.2. Connect to hardware

Prepare power adaptor、Micro USB cable、antenna、 power supply , connect them to test board
EXX-XXXTBL-01 , open corresponding serial port.

3.2. Communication in Mode 0



As shown above ,connect to jumpers(5V power supply ,mode 0) ,both EXX-XXXTBL-01 are configured this way , open serial port , for data TX and RX , and AUX indicator is blinking.



3.3. Other modes



As shown above , connect to jumpers (5V power supply , mode 1), see function details from E22 UART module manual.



As shown above , connect to jumpers (5V power supply , mode 2) , see function details from E22 UART module manual.



As shown above , connect to jumpers (5V power supply , mode 3) , see function details from E22 UART module manual.

Revision history

Version	Date	Description	Issued by
1.0	2020-01-09	Initial version	Linson

About us

Sales hotline: 4000-330-990

Tel: 028-61399028

Support: support@cdebyte.com

Website: www.ebyte.com

Address: Innovation Center B333~D347, 4# XI-XIN road,High-tech district (west), Chengdu, Sichuan, China



Chengdu Ebyte Electronic Technology Co.,Ltd.