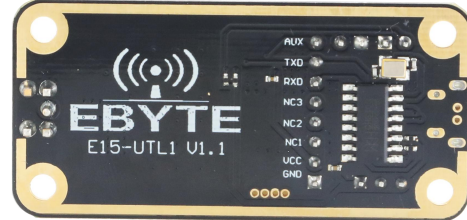




**成都亿佰特电子科技有限公司**

**Chengdu Ebyte Electronic Technology Co.,Ltd.**

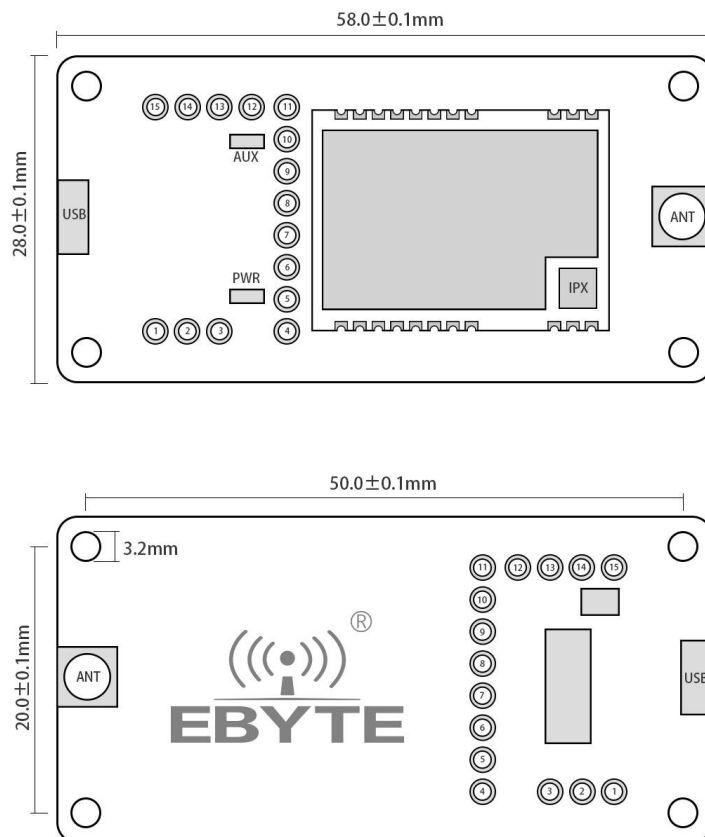
E43-900TB-01 Datasheet v1.1



## 1.Introduction

E43-900TB-01 is a set of test products formed by SMD serial port module combined with USB to TTL serial board for customer testing and development, which greatly reduces the difficulty of testing and development of customers. This manual describes how to use the test board for more details. Please refer to the E43-900T13S3 user manual.

### 1.1 Size and Interface Description



Pin number	definition	Function Description
1	5V	The 5V network on the backplane can be shorted to VCC with a jumper cap for module power input.
2	VCC	Module power input
3	3.3V	The 3.3V network on the backplane can be shorted to VCC with a jumper cap for module power input.
4	GND	Baseboard reference
5	VCC	Module power input
6	NC1	Users don't need to care
7	NC2	Users don't need to care
8	NC3	Users don't need to care
9	RXD	Backplane RXD, TXD pin for connection module, for testing
10	TXD	Chassis TXD, RXD pin for connection module, for testing
11	AUX	Module AUX. Refer to the user manual corresponding to the module for specific functions.
12	M1	Module M1, for module mode selection, suspension as "1", jumper cap and GND short connection as "0"
13	GND	Baseboard reference, often used with M1
14	M0	Module M0, for module mode selection, suspension as "1", jumper cap and GND short connection as "0"
15	GND	Baseboard reference, often used with M0

## 2. Quick start

### 2.1 Test preparation

#### 2.1.1 Driver Installation

Please download driver CH341SER. EXE (click download), double-click installation. This driver supports 32/64 bit Windows 10/8.1/8/7/VISTA/XP, SERVER 2016/2012/2008/2003, 2000/ME/98, and supports USB 3-wire and 9-wire serial ports through Microsoft digital signature authentication..

#### 2.2 Hardware Connection

Please prepare the Micro USB cable and antenna, connect to E43-900TB-01 and open the corresponding serial port.

#### 2.3 Mode 0 Communication



As shown in the figure, when the jumper cap is plugged in (select 5V power supply, mode 0), both E43-900TB-01 are configured in this way. When the corresponding serial port is opened, the data can be sent and received, and the AUX lamp flashing on the floor can be observed.



### 2.4 Other models



As shown in the figure, plug in the jumper cap (choose 5V power supply, mode 1). Refer to the corresponding serial module manual for specific functions.



As shown in the figure, plug in the jumper cap (choose 5V power supply, mode 2). Refer to the corresponding serial module manual for specific functions.



As shown in the figure, plug in the jumper cap (select 5V power supply, mode 3). Refer to the corresponding serial module manual for specific functions.

## About us

Technical support: [support@cdebyte.com](mailto:support@cdebyte.com)

Documents and RF Setting download link: [www.ebyte.com](http://www.ebyte.com)

Thank you for using Ebyte products! Please contact us with any questions or suggestions: [info@cdebyte.com](mailto:info@cdebyte.com)

-----  
Fax: 028-64146160 ext. 821

Web: [www.ebyte.com](http://www.ebyte.com)

Address: Innovation Center D347, 4# XI-XIN Road, Chengdu, Sichuan, China

 **成都亿佰特电子科技有限公司**  
Chengdu Ebyte Electronic Technology Co., Ltd.